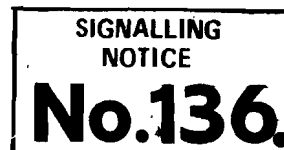


For the information of Railway Staff only.



EASTERN REGION

**SUPPLEMENTARY NOTICE
OF
SIGNALLING ALTERATIONS**

affecting the working of the line

from

SUNDAY, 19 MAY 1985.

**BETWEEN CLAYDON
(exclusive) and
STOWMARKET.**

YORK
MAY 1985

M042-6504

R.M. WILLIAMS
REGIONAL OPERATIONS MANAGER

SIGNALLING RECORD SOCIETY

www.s-r-s.org.uk

DIGITAL ARCHIVE

This PDF Copy has been provided free of charge by David Allen in order to assist your research into UK signalling.

This file is one of a number scanned by David Allen using material from his own collection and from the collections of Phil Deaves, Robert Dey, David Ingham, Simon Lowe, John McCrickard, John Midcalf, Roger Newman, Richard Pulleyn and Chris Wolstenholmes. Thank you one and all. Many of the original documents are now in the SRS Archive or at the National Railway Museum.

You may also like to provide copies of Signalling Notices and Weekly (and periodical) Operating Notices as scans or as originals. The SRS is always willing to accept donations of any signalling or signalling related material for inclusion in the Society's Archive. Please contact the [Archivist](#) in the first instance.

For a list of PDFs currently available visit the list of [Weekly](#) Notices or [Signalling](#) Notices page.

If you have benefited from this PDF copy, why not [join](#) the Signalling Record Society and receive support for your researches and access to the Society's Archives

Members receive "The Signalling Record" six times annually plus a newsletter and have the opportunity to purchase SRS [books](#) and other [publications](#) at a discount. They also have access to back issues of The Newsletter and The Signalling Record which are only available to members. These contain a wealth of information accumulated since 1970, much of which is not readily available anywhere else.

In addition, Members have the opportunity to join signalling related visits to locations on the UK national and London Underground systems; and to other UK Railways.

To join the Signalling Record Society visit

www.s-r-s.org.uk/membform.html

SATURDAY 18 AND SUNDAY 19 MAY - BETWEEN CLAYDON (EXCLUSIVE) AND HAUGHLEY JUNCTION (EXCLUSIVE) - STOWMARKET AREA RESIGNALLING

Stowmarket Signalbox will be reduced in status to a Gate Box with supervision of Stowmarket Station and Regent Street Level Crossings.

New and altered colour light signalling will be commissioned. Haughley Junction will then become the outpost signalbox to Colchester and the Track Circuit Block Regulations will apply.

A new "Stowmarket Down Goods Loop" (signalled in both directions) will be provided between 80mp and 80½mp using the former Down Siding, including a new crossover immediately south of the Down Goods Loop and a new facing crossover immediately south of Regent Street level crossing at 80m. 68chs.

All points/crossovers will be controlled from Colchester Signalbox.

Full details are shown on the diagrams included in this notice.

Description of Signals. CO = Colchester. ST = Former Stowmarket Signal Prefix

<u>Signal</u>	<u>Line</u>	<u>Aspect</u> M=Main PL = Position Light	<u>Route Indication</u>	<u>Application to or Towards</u>
---------------	-------------	------------------------------------------------	-------------------------	----------------------------------

Down Direction

CO381 (Former ST381)	Down Main	M		CO383
CO383 (Former ST383)	Down Main	M		CO385

Former Stowmarket 3-aspect Signal ST44 will be replated CO385. A Junction Indicator, associated position light and a route indicator will be provided and the following indications will apply:-

CO385 (Former ST44)	Down Main	M	Junction Indicator Position 1	Down Goods Loop CO389 Signal
		M		CO391
		PL	Stencil "G"	Down Goods Loop.

/Continued.....

<u>Signal</u>	<u>Line</u>	<u>Aspect</u> M=Main PL = Position Light	<u>Route Indication</u>	<u>Application to or Towards</u>
C0389	Down Goods Loop (Down) direction)	M		C0391
C0391	Down Main	M		C0393

The Haughley Junction Down Distant No. HJ393 Signal will be converted to a 3-aspect automatic signal replated C0393.

Up Direction

C0392R	Up Main Distant			C0392
--------	--------------------	--	--	-------

(The former Stowmarket Up Distant signal ST5 will be abolished).

C0392	Up Main	M		C0388
		M	Junction Indicator Position 4	Down Main C0390 Signal
C0390	Down Main (Up Direction) M	M		Up Main C0384 Signal
		PL	Junction Indicator Position 4	Down Goods Loop C0386 Signal
			Junction Indicator Position 4	Down Goods Loop Line occupied

C0388 (Former ST8)	Up Main	M		C0384
--------------------------	------------	---	--	-------

C0386	Down Goods Loop (Up Direction)	M		C0384
-------	--------------------------------------------	---	--	-------

/Continued.....

<u>Signal</u>	<u>Line</u>	<u>Aspect</u> M=Main PL = Position Light	<u>Route Indication</u>	<u>Application to or Towards</u>
C0384 (Former ST384)	Up Main	M		C0380

All signal-post telephones will communicate with Colchester Signalbox.

Position Light Signals Controlled From Colchester

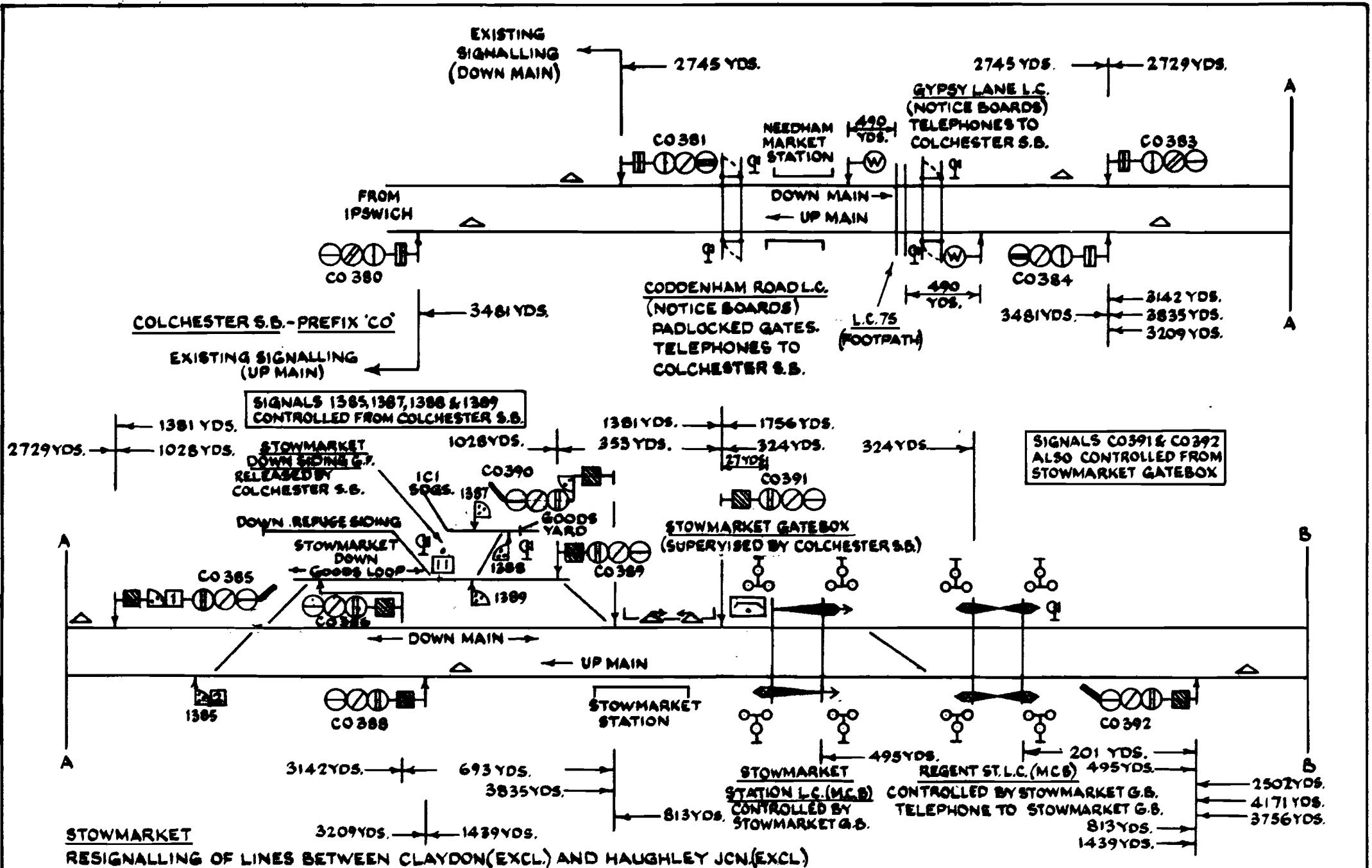
1385	Up Main		"G"	Down Goods Loop.
			"M"	Down Main C0391 signal.
1387	ICI Sidings			Goods Yard
1388	Goods Yard			ICI Sidings or Down Goods Loop
1389	Down Goods Loop			Goods Yard or along Down Goods Loop

Stowmarket Down Siding Ground Frame

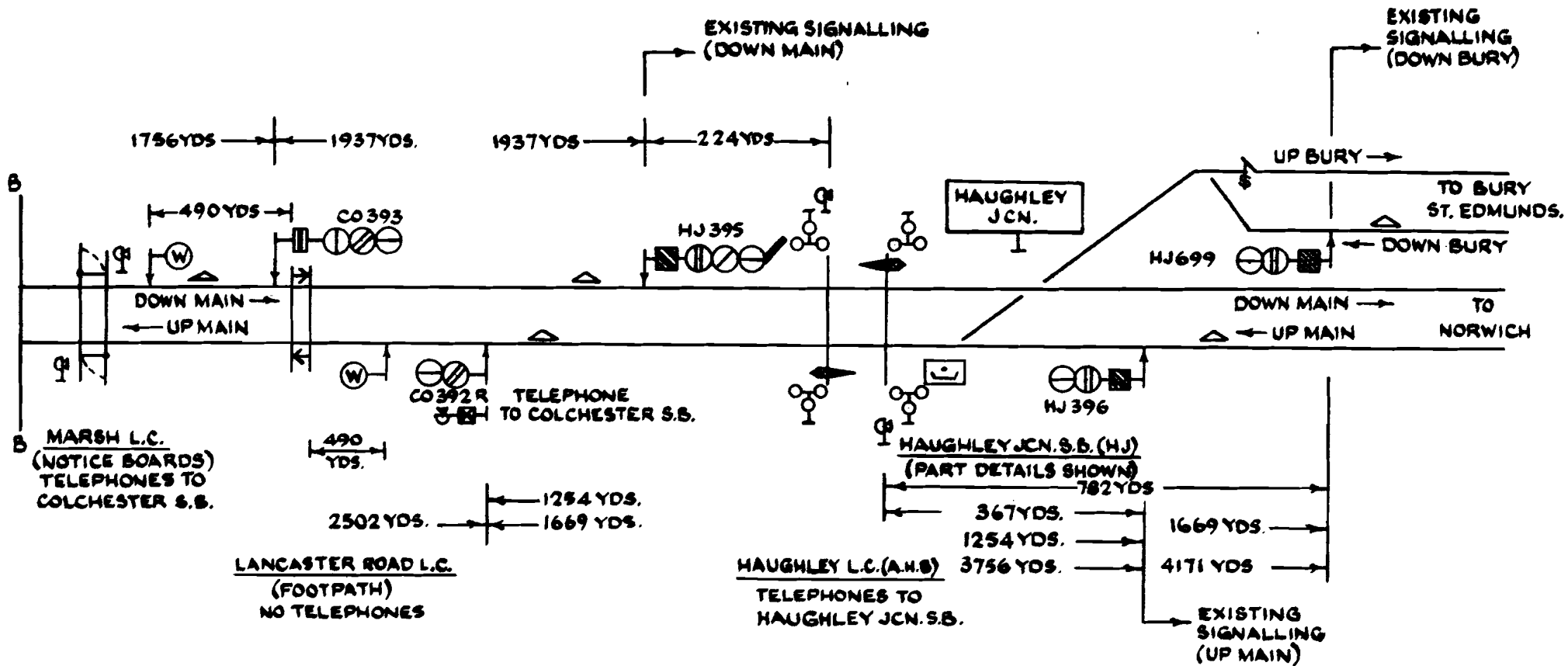
A new 2-lever ground frame with telephone to and release from Colchester will be provided to control the points - Down Goods Loop/Down Refuge Siding.

Automatic Warning System

A.W.S. will be provided in conjunction with all main line running signals.



STOWMARKET
RESIGNALLING OF LINES BETWEEN CLAYDON (EXCL.) AND HAUGHLEY JCN. (EXCL.)
SAT/SUN. 18/19 MAY 1985.
(CONTROLLED FROM COLCHESTER S.B.)



STOWMARKET

RESIGNALLING OF LINES BETWEEN CLAYDON (EXCL.) AND HAUGHLEY JCN. (EXCL.)

SAT/SUN. 18/19 MAY 1985.

(CONTROLLED FROM COLCHESTER S.B.)




KEY TO SYMBOLS

FIXED SIGNALS - COLOUR LIGHT



ROUTE INDICATORS



-  GREEN
-  YELLOW
-  RED



SIGNAL BOX




 AWS INDUCTOR

SIGNAL POST AND TELEPHONE SIGNS



AUTOMATIC SIGNAL

 AWS EQUIPMENT SUPPRESSED FOR MOVEMENTS IN OPPOSITE DIRECTION TO ARROW

-  = ROUTE INDICATOR (Numeral indicates total number of routes).
-  = POSITION LIGHT SIGNAL - Associated with main aspect -
-  = POSITION LIGHT SIGNAL - Not associated with main aspect -

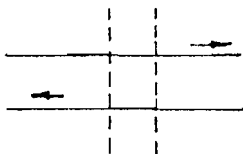
 CONTROLLED SIGNAL WITH TELEPHONE



LINESIDE TELEPHONE



NORMAL LIE OF POINTS



LEVEL CROSSINGS